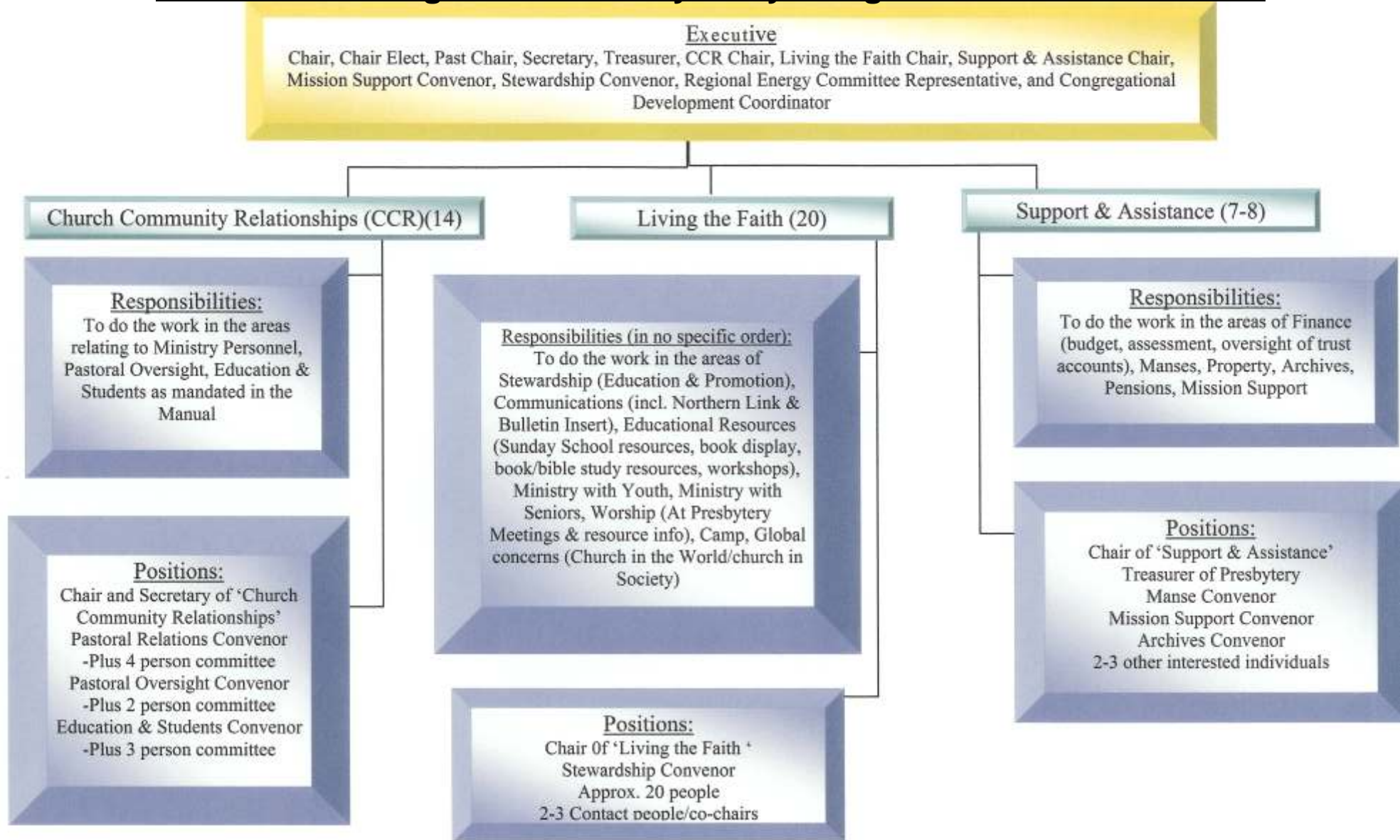


Northern Lights Presbytery Organizational Chart



Note: All committees need to appoint a secretary, who would minute meetings and prepare a written report to hand in during reporting time.

Note: Regional Energy Committee Representative is a Presbytery appointment to sit on the Northern Region Committee with the CDC.

Note: Chaplain of Presbytery is accountable to the Executive